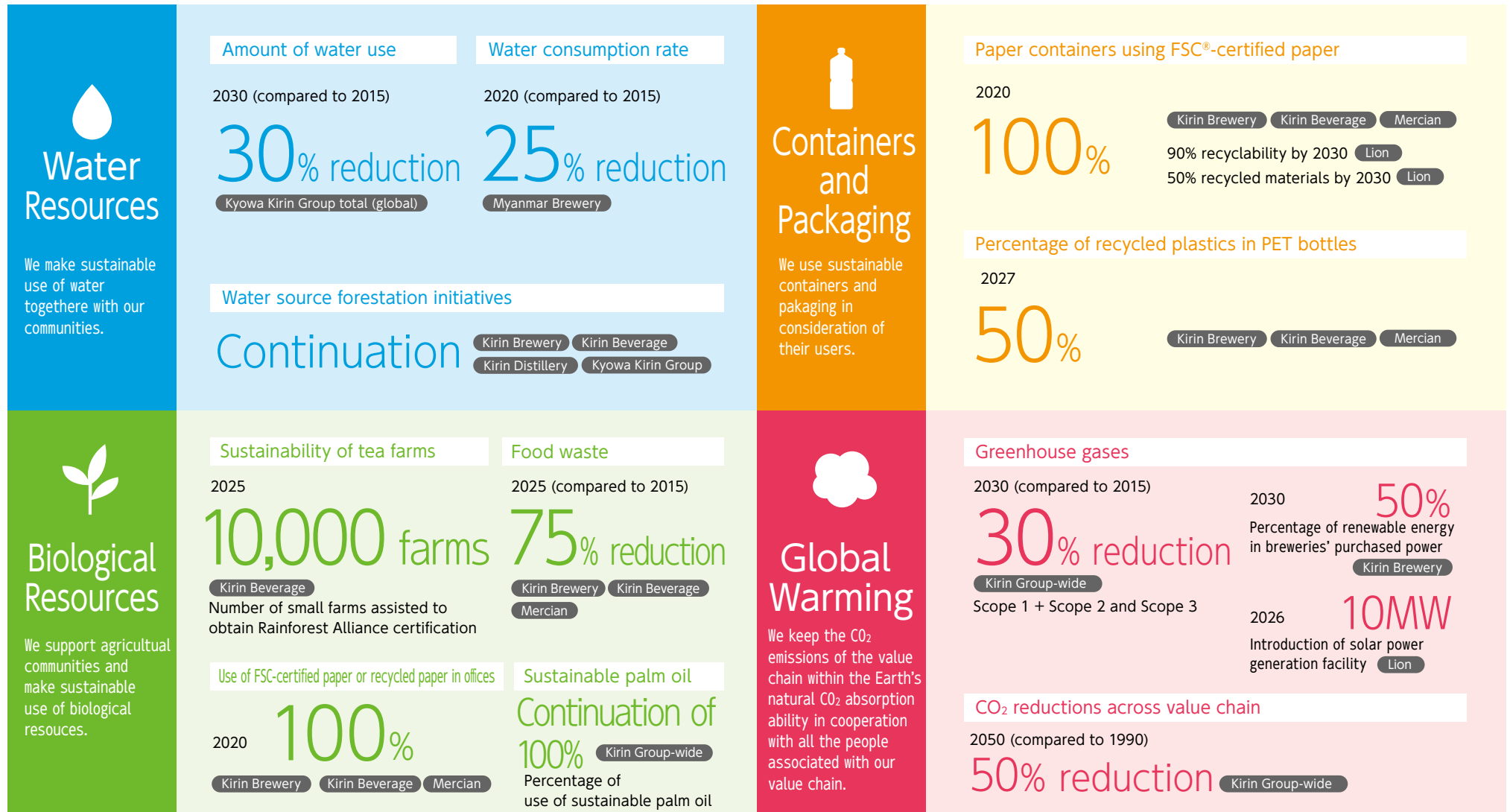


Key Targets of the Long-Term Environmental Vision and CSV Commitments



Progress

Theme	Issues	Progress	Page
Biological Resources	Securing biodiversity in Japanese farming land	Expanded ecological surveys on vineyards for Japan Wine to beyond Mariko Vineyard. Began revegetation activities with participation of the general public, as well as employees. Continued living creature observation events at Tono hops fields.	→P.23,25,26
	Sustainable use of bio-resource materials	Continued support for large tea estates in Sri Lanka to obtain certification. Commenced support for small tea farms to obtain certification in 2018. Achieved 100% use of FSC®-certified paper for major paper containers and packaging. Achieved high rate of use of FSC-certified paper or recycled paper in offices. Continued 100% use of palm oil (primary and secondary materials) certified by RSPO's Book & Claim.	→P.23,24,27,43
	Reduction of food waste	Promoted "Year-Month" labeling of use-by dates in Japan. Promoted food bank in Australia. Established reduction targets for Japan (75% compared to 2015 in 2025).	→P.23,30,31
Water Resources	Promotion of water conservation activities	50% reduction in water consumption rate by Kirin Brewery (in 2018, compared to 1990). 8% reduction in water use for whole of Kyowa Kirin Group (global) (in 2018, compared to 2015). 25% reduction in water consumption rate by Myanmar Brewery (in 2018, compared to 2015). Use of water risk surveys in 44 global manufacturing locations in nine countries to scenario analysis.	→P.14,15,16,33,36,38,39
	Water source conservation activities	Continued water source conservation activities in 12 locations nationwide.	→P.33,35
	Conservation of water resources in production regions	Continued water resources conservation activities and education on Sri Lankan tea farms.	→P.33,34
Containers and Packaging	Expansion of use of sustainable raw materials for containers and packaging	Established Kirin Group Plastics Policy and maintained and expanded coastal clean-up activities. Launched sale of Nama-cha Decaf green tea beverage in PET bottles made with 100% recycled PET plastic. Percentage of recycled plastic in PET bottles in Japan: 2%. In paper containers, achieved 100% use of FSC-certified paper for beer 6-can packs, gift boxes, and product cardboard cartons, approximately 97% for drink boxes, and approximately 98% for beverage 6-can packs.	→P.41,42,43
	Promotion of 3R/resource circulation for containers and packaging	Achieved 28.3 grams 2.0-liter PET bottle for Alkali Ion Water, the lightest in Japan. Achieved PET bottles recycling rate of 84.8%, aluminum cans recycling rate of 92.5%, and stainless steel cans recycling rate of 93.4% in Japan (FY2017).	→P.41,46,47,52
Global Warming	Promotion of reduction of GHG emissions	Decided on introduction of heat-pump systems in all breweries in Japan. Began joint transport on beer pallets. Achieved 3.8% reduction in Scope 1 + Scope 2 GHG emissions (in 2018, compared to 2015). Achieved 10% reduction in Scope 3 GHG emissions (in 2018, compared to 2015).	→P.55,57,59,64,65
	Promotion of introduction of renewable energies	Achieved ratio of 29% for renewable energy in plants' purchased power by Kirin Brewery.	→P.55,62,63,92

External Evaluation

Kirin Holdings was recognized by CDP, an international non-profit organization that provides environmental information disclosure systems, as an “A-List” company for water security. This is the third consecutive year that we have received this score. We obtained an “A-” ranking in the “climate change” category. In 2019, we also obtained an “A” rating, the highest rating for the category, in the Supplier Engagement Ratings, and we were selected for the first time for the Supplier Engagement Rating Leader Board, recognizing us as a global leader in supply-chain climate change action.



The Kirin Group conducts transparent disclosure of information to its investors and other stakeholders. As such, we have been selected for the following Socially Responsible Investment (SRI) indices.



THE INCLUSION OF [ISSUER ENTITY NAME] IN ANY MSCI INDEX, AND THE USE OF MSCI LOGOS, TRADEMARKS, SERVICE MARKS OR INDEX NAMES HEREIN, DO NOT CONSTITUTE A SPONSORSHIP, ENDORSEMENT OR PROMOTION OF [ISSUER ENTITY NAME] BY MSCI OR ANY OF ITS AFFILIATES. THE MSCI INDEXES ARE THE EXCLUSIVE PROPERTY OF MSCI. MSCI AND THE MSCI INDEX NAMES AND LOGOS ARE TRADEMARKS OR SERVICE MARKS OF MSCI OR ITS AFFILIATES.

Greenification Awards

Kirin Brewery's Yokohama Brewery was awarded the Japan Greenery Research and Development Center Chairman's Prize, and its Kobe Brewery was awarded the Prime Minister's Prize for Persons of Merit in Greenification Promotion.



Environmental Report

The Kirin Group Environmental Report 2018 was awarded the Prize for Excellence in Environmental Reports (Global Environmental Forum Chairman's Award).



Packaging and Containers

Kirin Brewery's lightweight middle-sized (returnable) bottle, the lightest in Japan received a WorldStar Award in the Beverage Category of the WorldStar 2018 Packaging Awards, hosted by the World Packaging Organization (WPO), and the Function and Environment Award at the 14th Glass Bottles Awards. Our aluminum can, which is the lightest in Japan, won the 41st Kinoshita Prize, and our 2L PET bottle, also the lightest in Japan, was awarded the 40th Kinoshita Prize, WorldStar Award, and AsiaStar Award in 2016.

